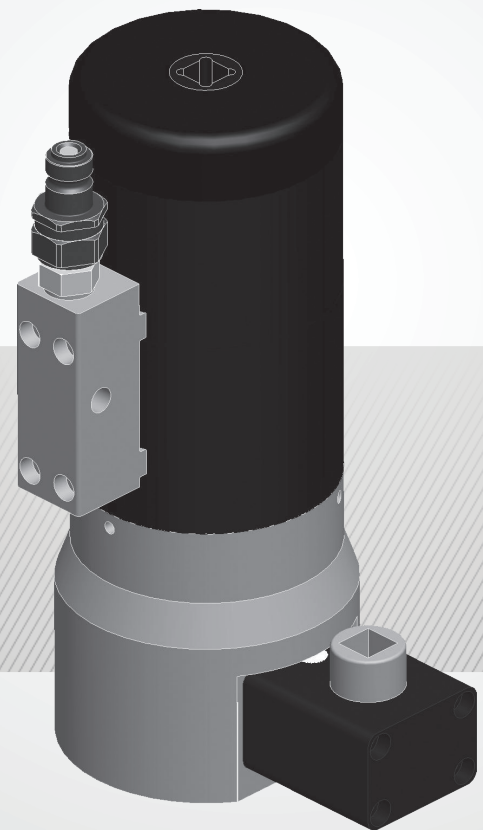


WINDMASTER[™] M39 X 4 MULTI-DECK TENSIONER

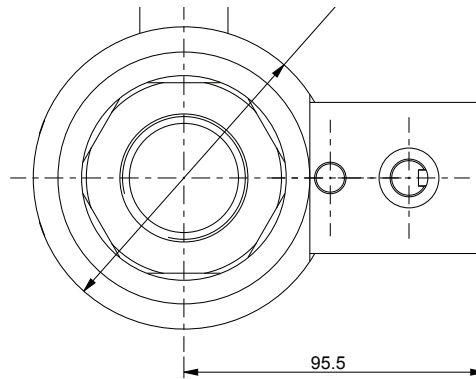
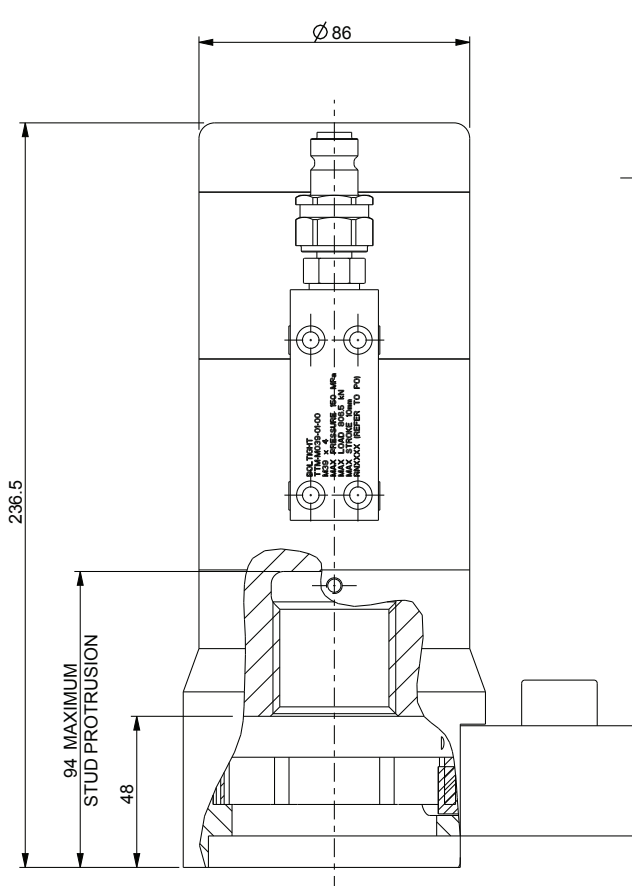
NEW TECHNOLOGY





SUPERIOR BOLTING SOLUTIONS®

WINDMASTER™ M39 X 4 MULTI-DECK TENSIONER



VIEW SHOWING BRIDGE PROFILE

SPECIFICATION		
MAX WORKING PRESSURE	150	MPa
MAX LOAD	806.5	kN
MAX STROKE	10	mm
APPROX. TOOL WEIGHT	8.75	kg

TOOL FEATURES:

- FAST SPRING RETURN
- 10,000 CYCLE FATIGUE LIFE
- LONG LIFE SEAL PERFORMANCE
- OPTIONAL NIPPLE/COUPLING CONFIGURATIONS
- LOW MAINTANCE GEAR DRIVE

